

LSU GIS Information Clearinghouse

This slideshow provides a brief description of the Clearinghouse:

Background

Data access options

Contacts



Background

- Established in the aftermath of Katrina as a central repository of geospatial data related to the disaster for affected areas of Louisiana

- Expanded to maintain perishable data from Rita and Wilma

- Initiated through FEMA and LSU collaboration, the Clearinghouse facilitates many of the data access and distribution needs of Federal, State, and Local efforts

- With 20 terabytes of storage capacity and download ability through the Clearinghouse's website, katrina.lsu.edu, this resource is active in meeting the needs of the mitigation and long-term planning aspects of rebuilding Louisiana

- In addition to the downloadable data available through the website, the Clearinghouse stores information that is not for public release and provides secure access for appropriate agencies

- Managing the data and the data requests are faculty, research associates, and graduate students at LSU. These personnel comprise a vast range of research, technical, and managerial skills necessary for effective geospatial decision support and data management

Access to Data

Katrina.lsu.edu

Our data can be accessed in several ways, depending on your information needs.

First, publicly accessible data is available for download through our website, katrina.lsu.edu. In addition to geospatial data, this site also provides contact information, sponsor information, photo galleries, and related links such as atlas.lsu.edu which provides extensive geospatial data for Louisiana.

GIS-Store

GIS-Store is our 20TB storage location which provides the data for katrina.lsu.edu, but most importantly serves as the clearinghouse for geospatial data related to Louisiana and Katrina, Rita, and Wilma. GIS-Store is password-protected and available only to designated government and academic personnel involved in the recovery efforts. Contact Farrell Jones (fjones@lsu.edu) or Ramesh Ramani (rraman1@lsu.edu) with requests for access to GIS-Store.

Raster Server

Due to our extensive collection of pre and post hurricane imagery, we are in the process of providing online access to various imagery through the Raster Server website rasterserver.lsu.edu. This is to assist users to download all available data in different projections and file formats for a selected area of interest.



HURRICANE KATRINA & RITA

Information Clearinghouse

General

Data

Contribute

More Information

:: ABOUT THE SITE

This clearinghouse has been established at the Louisiana State University, Baton Rouge to facilitate the collection, dissemination, and archiving of data related to Hurricane Katrina and Rita. Katrina made landfall in Louisiana on Monday, August 29, 2005 and Rita made landfall on September 24, 2005.

ALL ABOUT LSU GIS CLEARINGHOUSE & SERVICES PROVIDED **New!**

:: SPONSORS

[Louisiana State University](#)

[CADGIS Research Laboratory, LSU](#)

[Federal Emergency Management Agency](#)

[Hurricane Center, LSU](#)

[World Health Organization Collaborating Center, LSU](#)

[Louisiana Geological Survey](#)

[Louisiana Geographic Information Center](#)

[Earth Scan Laboratory, LSU](#)

:: DOWNLOADS

Map Products, Reports & Data Downloads

[Rapid Population Estimate Report for New Orleans - Report from Emergency Operations Center, New Orleans](#) (Jan 28-29, 2006 survey report; data provided by Greater New Orleans Community Data Center) **New! Added 03/10/06**

[Post Disaster Population Estimates by the Louisiana Department of Health and Hospitals](#) (with data provided by Greater New Orleans Community Data Center) **New! Added 03/10/06**

[Proceed to download...](#)

Data Server & Websites

GIS Store

Information on the 20 TB data server housed in LSU for hurricane related efforts; available data etc. [More...](#)

[Available Data](#)

Latest changes! New!

Atlas, The Louisiana Statewide GIS

Download a variety of Louisiana data online including

:: RESEARCH

This section will be dedicated to providing information on research activities related to hurricanes Katrina & Rita. [More info...](#) **Updated 03/13/06!**

:: CONTACT

Contact information for various programs areas are available here.

.: [Program Coordination](#)

.: [FEMA Coordinators](#)

.: [Remote Sensing](#)

.: [Webmaster/GIS Data](#)

.: [Mapping Sciences & Analysis](#)

.: [Hurricane Storm Surge](#)

.: [Hurricane Winds](#)

.: [Public Health Impacts](#)

.: [Environmental Impacts & Environmental Quality](#)

.: [Social, Cultural & Economic Impacts](#)

.: [Cultural & Heritage](#)

:: NEWS

[IMPORTANT CHANGES IN THE GIS STORE: REORGANIZATION.](#)

New! Added 03/24/06

[Louisiana Office of Homeland Security & Emergency Preparedness - Lessons Learned](#) (a report) **New! Added 03/24/06**

Data on population estimates available now in [Research section!](#)

:: PHOTO GALLERIES



View images from hurricanes Katrina & Rita

:: USEFUL DATA LINKS



Examples of data available for download from

Katrina.lsu.edu

imagery

shapefiles

maps

tables

reports

	A	B	C	D	E	F	G
1	*Estimated Replacement Cost in damaged zipcodes. All values are in thousands (000s) of dollars.						
2	ZIP-CODE	Sum AGRI1 BLDG	Sum_COM101 BLDG	Sum_COM11 BLDG	Sum_COM21 BLDG	Sum_COM31 BLDG	Sum_COM41 BLDG
3	70632	\$0	\$0	\$158	\$0	\$47	\$0
4	70643	\$147	\$0	\$1,613	\$827	\$1,206	\$1,906
5	70645	\$501	\$0	\$2,218	\$367	\$261	\$306
6	70647	\$477	\$0	\$8,103	\$905	\$2,533	\$3,157
7	70663	\$2,273	\$0	\$51,159	\$21,742	\$19,315	\$23,321
8	70665	\$862	\$0	\$9,160	\$26,987	\$3,084	\$13,971
9	70668	\$97	\$0	\$5,286	\$0	\$907	\$1,403
10	70669	\$180	\$0	\$9,801	\$7,859	\$3,963	\$5,209
11	70774	\$219	\$0	\$4,297	\$750	\$810	\$1,061
12	70001	\$2,780	\$0	\$49,284	\$47,888	\$30,955	\$113,382
13	70002	\$1,310	\$0	\$120,915	\$36,814	\$41,526	\$203,509
14	70003	\$1,437	\$0	\$64,643	\$9,182	\$10,562	\$33,738
15	70005	\$1,526	\$0	\$36,461	\$5,251	\$15,449	\$67,098
16	70006	\$530	\$0	\$43,745	\$7,446	\$20,177	\$70,673
17	70031	\$0	\$0	\$229	\$235	\$106	\$0
18	70032	\$153	\$0	\$12,892	\$39,887	\$5,631	\$7,014
19	70036	\$66	\$0	\$488	\$380	\$881	\$511
20	70037	\$1,052	\$0	\$14,225	\$16,078	\$6,226	\$13,973
21	70039	\$102	\$0	\$3,084	\$152	\$1,747	\$3,259
22	70040	\$0	\$0	\$897	\$116	\$1,252	\$1,133
23	70041	\$320	\$0	\$6,504	\$807	\$1,187	\$4,048
24	70043	\$1,117	\$0	\$47,510	\$8,025	\$20,826	\$23,877
25	70047	\$181	\$0	\$5,240	\$5,305	\$1,582	\$5,134
26	70051	\$0	\$0	\$469	\$0	\$213	\$420
27	70053	\$1,134	\$0	\$81,098	\$15,952	\$23,275	\$31,193
28	70056	\$1,469	\$0	\$35,430	\$8,400	\$23,893	\$39,137
29	70058	\$670	\$0	\$81,029	\$34,464	\$29,700	\$55,000
30	70062	\$420	\$0	\$52,821	\$49,094	\$43,469	\$108,318
31	70065	\$1,132	\$0	\$72	\$0	\$0	\$0
32	70067	\$108	\$0	\$2	\$0	\$0	\$0
33	70068	\$1,498	\$0	\$0	\$0	\$0	\$0
34	70070	\$289	\$0	\$11	\$0	\$0	\$0
35	70072	\$2,046	\$0	\$52	\$0	\$0	\$0
36	70075	\$0	\$0	\$3	\$0	\$0	\$0

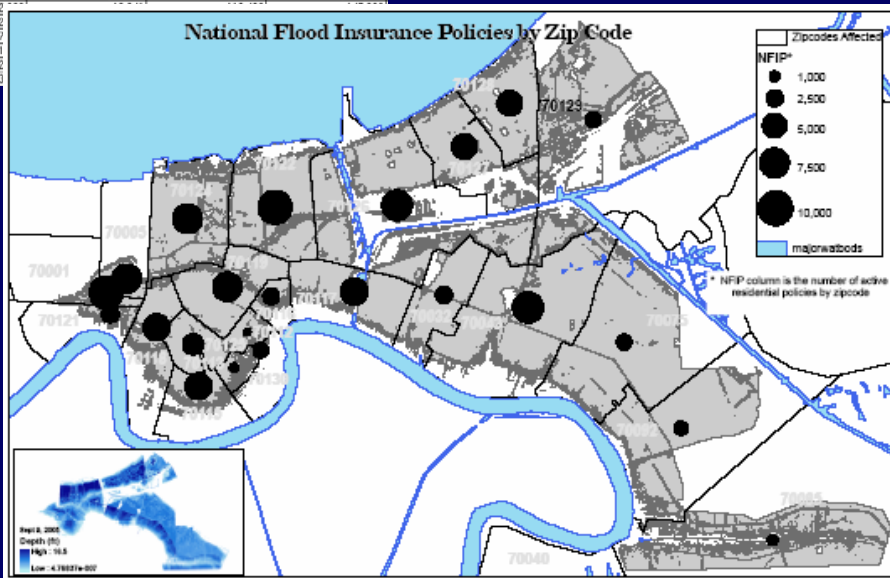
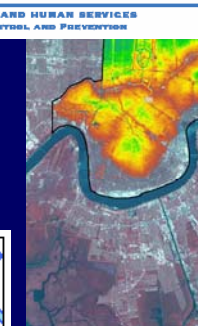


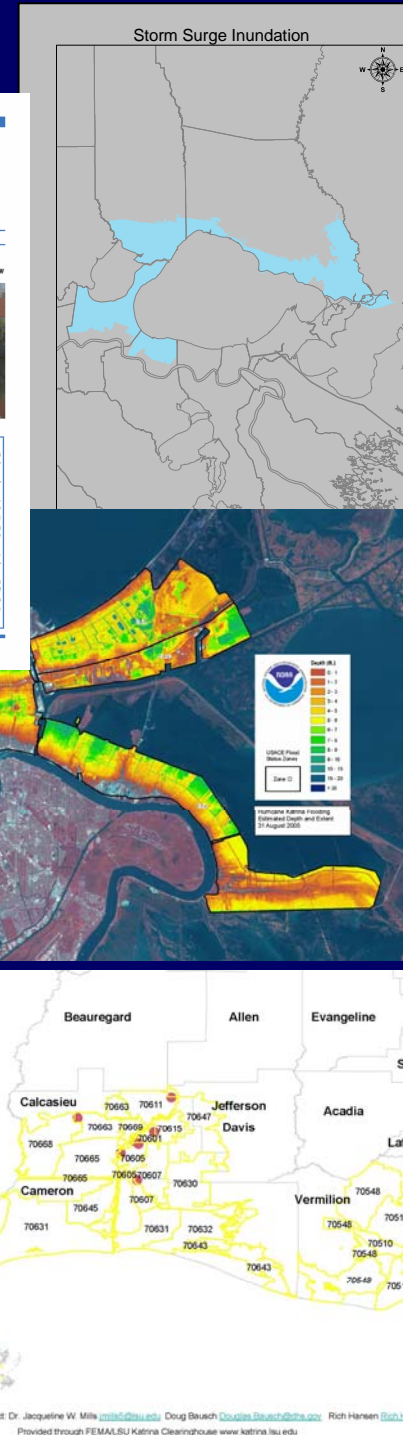
PHOTO ASSOCIATED PRESS



Hurricane Katrina Flooding, Estimated Depth and Extent, 17 August 2005



Source: HAZUS-MH Data (2004) Contact: Dr. Jacqueline W. Mills jmills@lsu.edu Doug Bauch douglas.bauch@lsu.edu Rich Hansen rich.hansen@lsu.edu

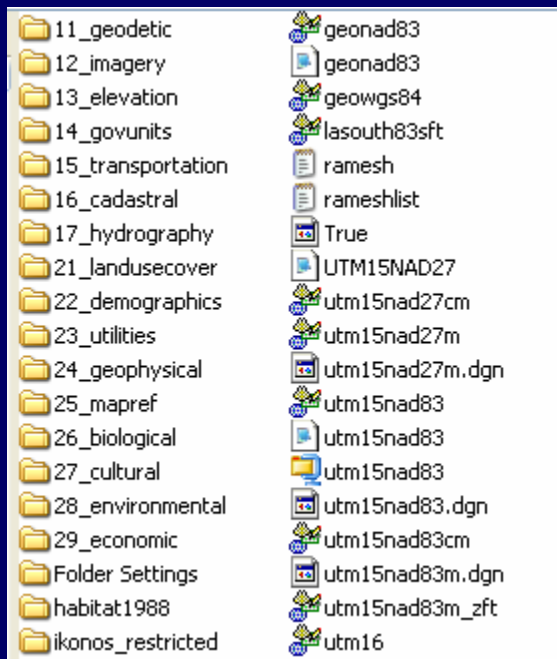


Source: HAZUS-MH Data (2004) Contact: Dr. Jacqueline W. Mills jmills@lsu.edu Doug Bauch douglas.bauch@lsu.edu Rich Hansen rich.hansen@lsu.edu

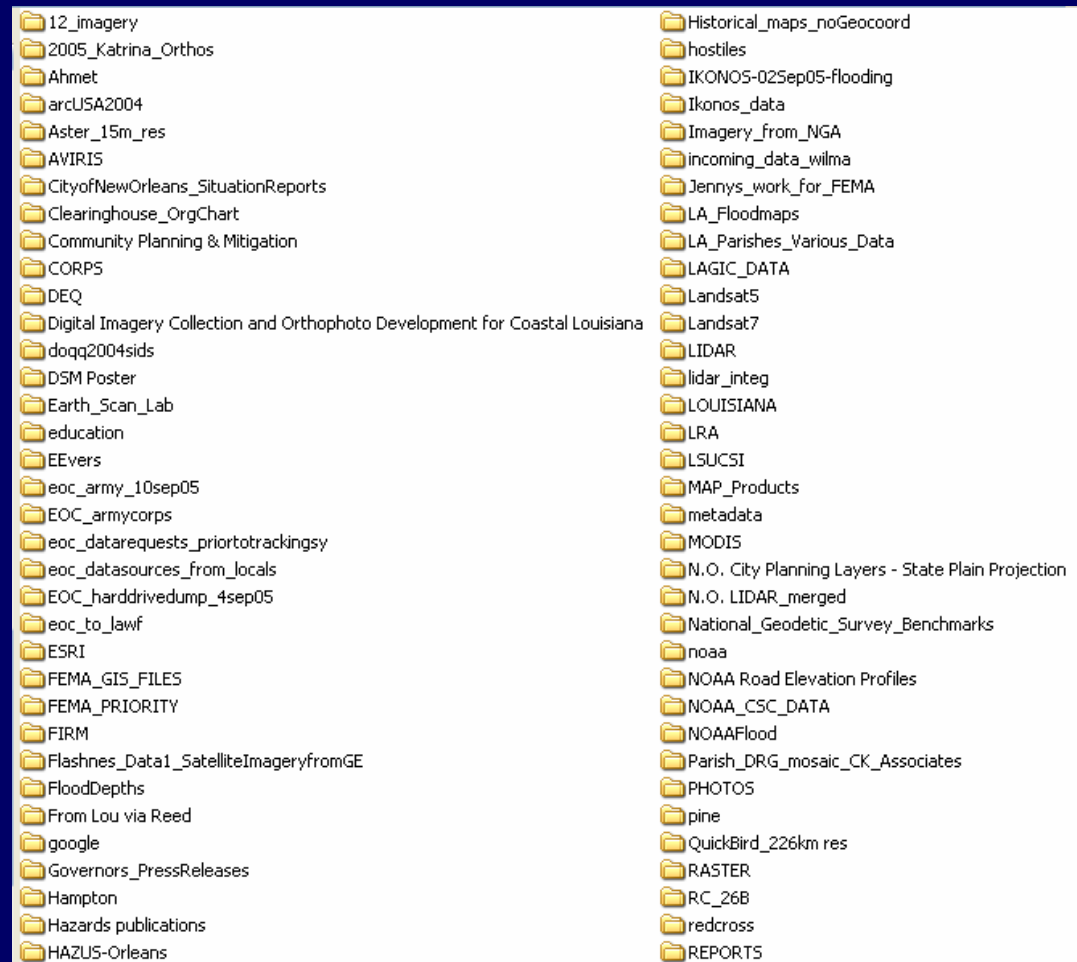
GIS-Store

GIS-Store has two main folders, clients utilize to meet their data needs. They are called “data” and “incoming data”. Though GIS-Store does have additional folders, such as “projects” and “products”, these do not hold data for public release.

Data



Incoming Data



AVAILABLE DATA IN THE GIS- STORE

This is a snapshot of latest data which is available in the data folder of the [GIS Store](#).
Download this as an [excel sheet](#)

This section is currently being improvised. If you have any questions on data availability, please email [here](#).

S.No	Folder	Subfolder	Category	Data formats	Description
1	12_imagery	ADS40	Raster	tif	Post Katrina 1 ft imagery from 3001 Inc.
-	-	DOQQ	Raster	jp2 & geotiff (2004) & MrSID (1998)	DOQQ 1998 & 2004 qquads and mosaics
-	-	NOAA	Raster	tif	Post Katrina NOAA Imagery
2	dem24k	-	Raster	dem	USGS DEM 24k
3	drg100k	-	Raster	tif	DRG 1:100k
4	drg24kutm15	-	Raster	tif	DRG 1: 24K UTM15N
5	drg24kutm16	-	Raster	tif	DRG 1:24K UTM16N
6	drg250k	-	Raster	tif	DRG 1:250k
7	gnis	gnis2000	Vector	mdb & shp	USGS GNIS data
-	-	gnis2004	Vector	mdb & shp	-
8	habitat1988	-	Vector	shp & e00& coverage	NWI 1988
9	ikonos_restricted	-	Raster	tif	Dated Sep 02, 2005 /Ikonos Imagery
10	Image_Indexes	-	Vector	mdb & shp	Footprints of various available data on GIS Store
11	imageAmerica_restricted	-	Raster & Vector	MrSID & ArcGIS Grid	Dated Sep 02, 2005. Post Katrina: overview orthorectified image of an approximate 600 sq mi
12	lagiscdv2	NWIHabitat	Raster	tif	LA GIS CD
-	-	shapefiles	Vector	shp	-
-	-	TMImageNorth	Raster	tif	-
-	-	TMImageSouth	Raster	tif	-
-	-	TMParishimages	Raster	tif	-

AVAILABLE DATA IN THE GIS- STORE

As of 02/23/06: This is a snapshot of latest data which is available in the **INCOMING DATA** folder of the [GIS Store](#).
Download this as an [excel sheet](#)

This section is currently being improvised. If you have any questions on data availability, please email [here](#).

S.No	Folder	Subfolder	Category	Data formats	Description
1	12_imagery	-	-	-	-
-	-	ADS40	Raster	tif	1-ft post katrina imagery from 3001 Inc.
-	-	ASTER	Raster	tif	9/4/05 mosaic, 15m res.
-	-	DOQQ	Raster	-	-
-	-	GEImagery	Raster	tif	8/31/05-9/3/05 1-1 25' res.
-	-	IKONOS	Raster	tif	post Katrina flooding imagery
-	-	Imagery_from_NGA	Raster/Vector	tif/shp	post Katrina flooding imagery
-	-	LandSat5	Raster	tif/sid	pre and post Katrina images
-	-	LandSat7	Raster	sid	2002 LandSat7 images
-	-	MODIS	Raster	tif	8/30/05-9/6/05 images
-	-	NOAA_Aerials	Raster	sid/geotiff	8/30/05-9/8/05 images
-	-	QuickBird	Raster	shp/jpeg/tif/sid	8/31/05-9/8/05 images
-	-	Radarsat	Raster	-	9/1/05-9/6/06 images
-	-	RASTER	Raster	sid	post-Katrina images
-	-	SPOT	Raster	tif	8/30/05-early September images
-	-	Topo	Raster	tif	1:100,000 and 1:250,000 USGS Topos
2	2005_Katrina_Orthos	-	Raster	-	-
3	arcUSA2004	-	Raster/Vector	sid&shp	ESRI base data
-	-	background	-	-	-
-	-	census	Vector	hkr	ESRI layers from Census
-	-	hclp	html	html	metadata for ESRI base layers
-	-	hydro	Vector	hkr	ESRI layers of hydrography
-	-	landmarks	Vector	hkr	ESRI layers of landmarks

RASTER SERVER

The Raster Server is a Web application to assist with rapidly browsing, extracting, and downloading raster data from the multi-terabyte LSU raster repository (GIS Store). The Web application exploits the innovative enterprise data management capabilities of TerraShare and scalable Web dissemination capabilities of GeoMedia WebMap.

- The data that will be made available will consist of mainly pre-katrina and post-katrina raster imagery.

Extract Raster Image:

Projection:

UTM-15 NAD83 (m)

Image Size (pixels):

2Kx2K

Output Format:

TIFF + World File

Preview

Extract

Image Preview

Extraction Preview:

Full Detail (at center):



Contact Information

General Enquiries: clearinghouse@lsu.edu

Dr. Barrett Kennedy
Program Coordination
arkenn@lsu.edu
225-578-6904

Dr. John Pine
Program Coordination
jpine@lsu.edu
225-578-1075

Farrell Jones
Webmaster; access to GIS-Store
fjones@lsu.edu
225-578-6135

Ramesh Ramani
Webmaster; access to GIS-Store;
Raster Server; Terrashare
rraman1@lsu.edu
225-578-5861

Dr. Jacqueline Mills
GIS data; analysis; data requests
jmills5@lsu.edu
225-578-5861

Dr. Charles Flanagan
FEMA Coordinator
Charles.Flanagan@dhs.gov

Jennifer Meyer
FEMA Coordinator
Jennifer.Meyer@dhs.gov