

Map 6:
Distribution of "Family" Low Income Housing Tax Credit
Projects (1990 - 2004) and
African American Population in
Charlotte-Gastonia-Rock Hill MSA

Legend:

MSAs

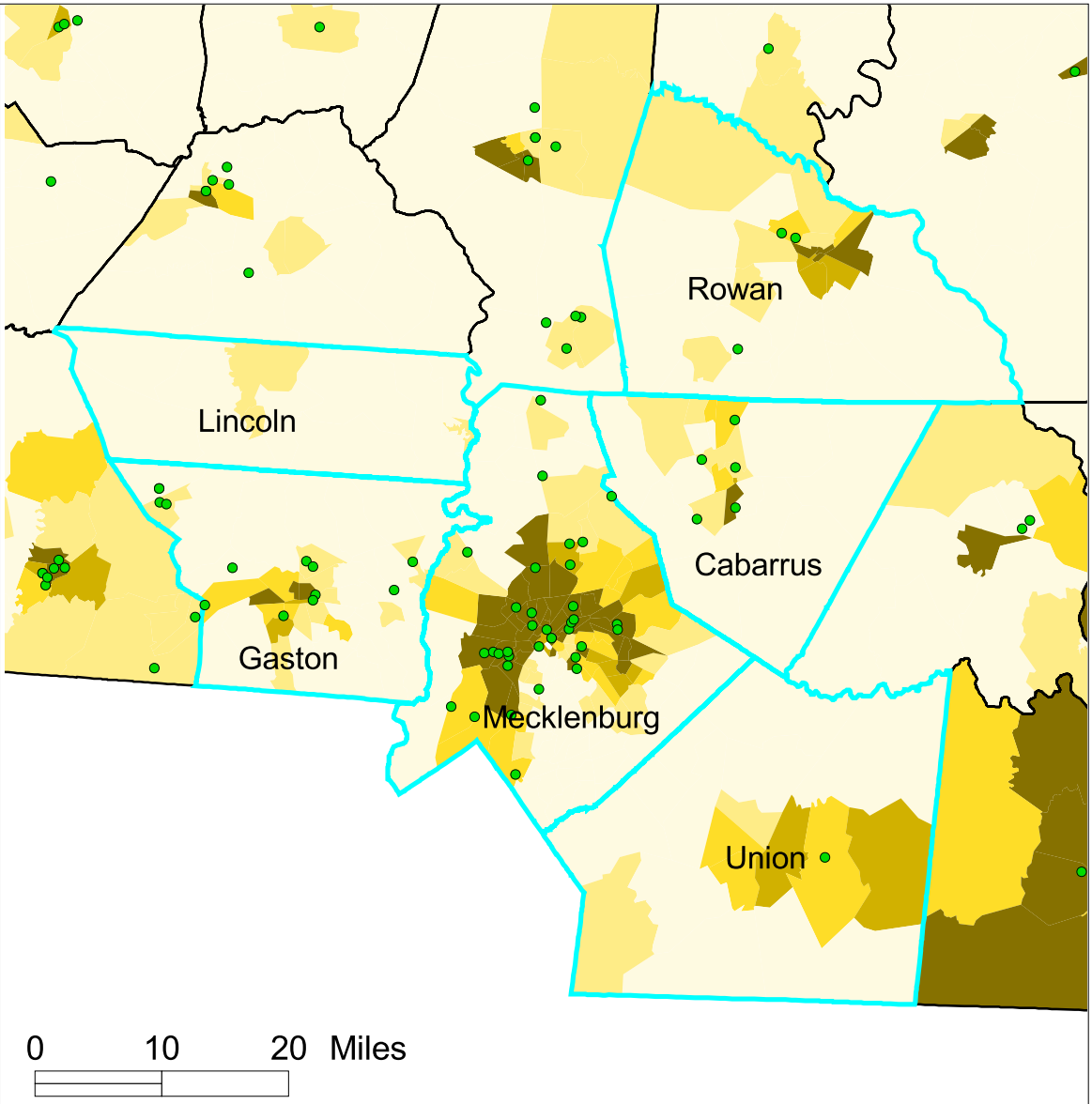
- Charlotte-Gastonia-Rock Hill**
- Greensboro-Winston-Salem-High Point**
- Raleigh-Durham-Chapel Hill**

Percent African American 2000

- 0 - 10**
- 10 - 21.6**
- 21.6 - 30**
- 30 - 40**
- 40 +**

Low Income Housing Tax Credit Projects

- Site of LIHTC Project (Family)**
- County Boundaries**
- Charlotte**



Prepared by:

Kirwan Institute for Study of Race & Ethnicity

Sources of data:

U.S. Census Bureau, Census Tract Data for 2000;

U.S. Department of Housing and Urban

Development; State of North Carolina