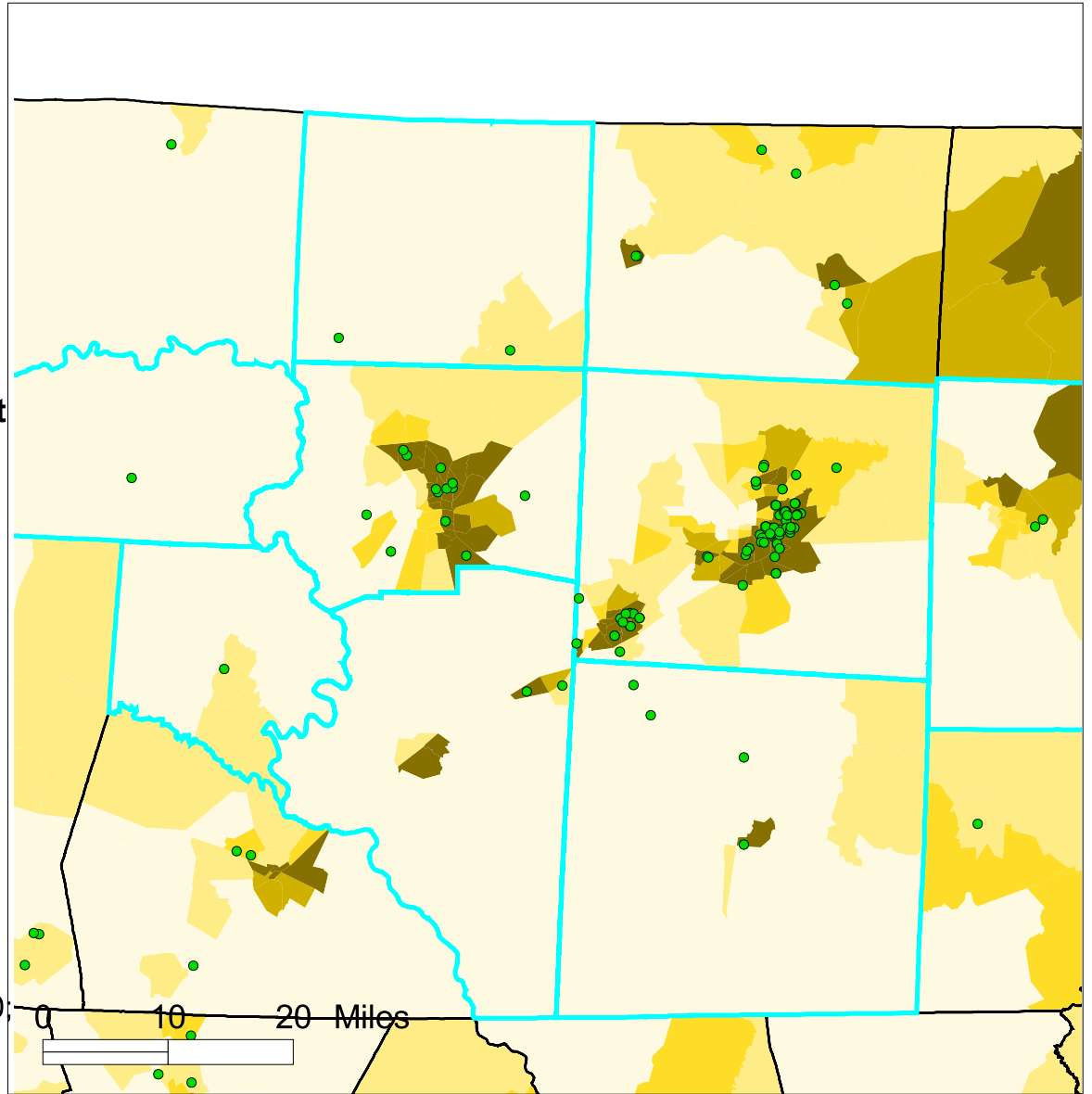
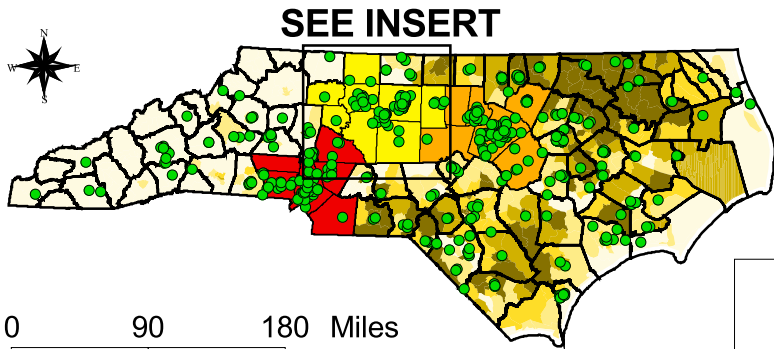


Map 7:
Distribution of "Family" Low Income Housing Tax Credit
Projects (1990 - 2004) and
African American Population in
Greensboro-Winston-Salem-High Point MSA



Legend:

MSAs

- Charlotte-Gastonia-Rock Hill
- Greensboro-Winston-Salem-High Point
- Raleigh-Durham-Chapel Hill

Percent African American 2000

- 0 - 10
- 10 - 21.6
- 21.6 - 30
- 30 - 40
- 40 +

Low Income Housing Tax Credit Projects

- Site of LIHTC Project (Family)
- County Boundaries
- MSA County Boundaries

Prepared by:

Kirwan Institute for Study of Race & Ethnicity

Sources of data:

U.S. Census Bureau, Census Tract Data for 2000;

U.S. Department of Housing and Urban
 Development; State of North Carolina